



**KHK**<sup>®</sup>  
**GROUP**  
*Quality Matters...*



**TRAPEZOIDAL PROFILE**



**MULTIWALL POLYCARBONATE SHEET**



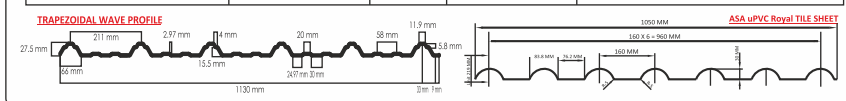
**PUFF PANEL**



**ROYAL TILE SHEET**

**Product Features :**  
 Corrosion Resistance  
 Heat & Sound Insula  
 No Rain Drum Sound  
 Flame Retardant  
 30+ Years Life

Profile Name	Thickness (mm)	Width (mm)	Standard Length	Color
Trapezoidal Wave Profile	1.5, 2.0, 2.5, 3.0, 3.5, 4.0	1130	8,10,12 Ft.	Blue, White, Green, Gray, Terracotta, Off white, Beige
ASA uPVC Royal Tile Sheet	2.3, 2.5	1050	2.41, 3.07, 3.73, 4.38, 5.03, 5.47, 6.13 Mtr.	Gray & Terracotta

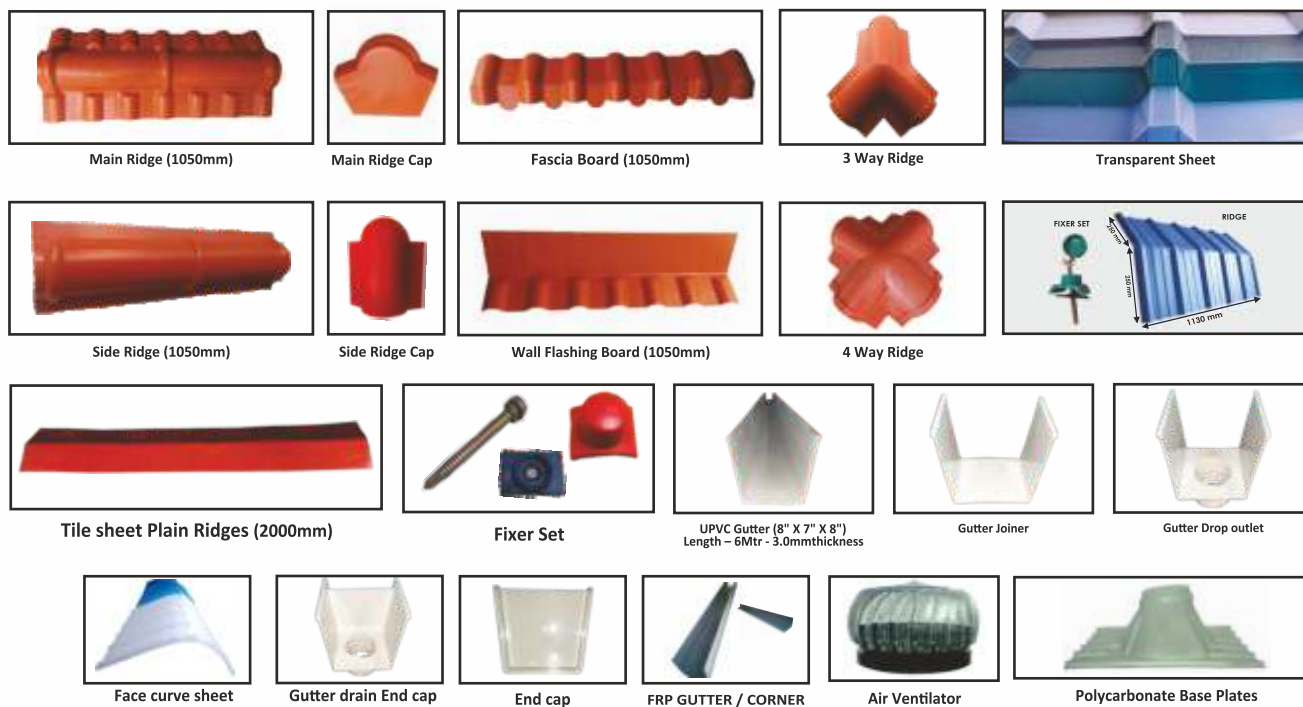


## MATERIAL STRUCTURE

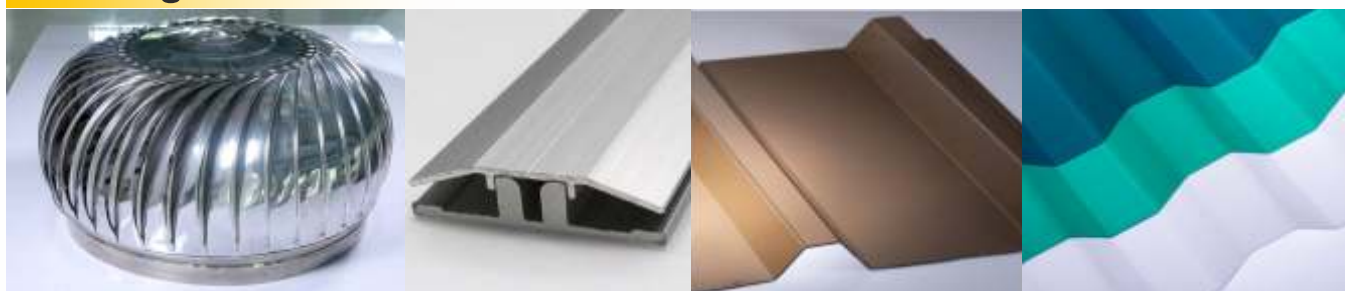


1. Surface Layer - The material is ultra-weather resin, to block the solar ultra violet and reduce the coefficient of heat conductivity, ensure product durability and resistance to chemical corrosion.
2. Surface Intermediate Layer - contains Multi foam giving to the material light weight and improved sound and thermal insulating properties.
3. Underlying layer - for just a good material toughness special to ensure the strength at the same time, increase the rigidity and light illumination.

## ACCESSORIES



## Roofing Accessories



Turbo Ventilator

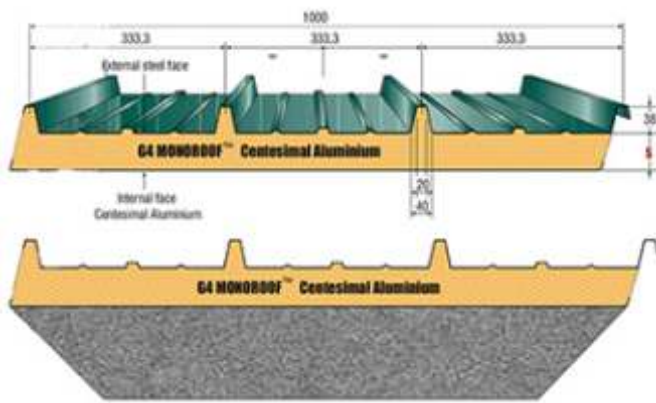
Aluminum Connector

Polycarbonate Corrugated Sheets

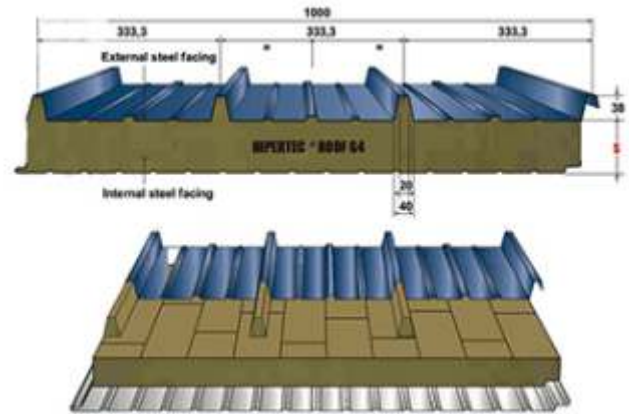
## Water Proofing and Insulation



## Roof Panels

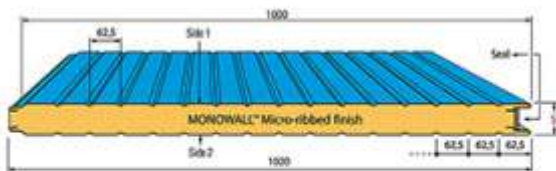


Polyurethane Insulation Material  
an internal flat liner with an insulation core of PUF/PIR. The panels have a mechanism of panel-to-panel interlocking which provides an effective seal.

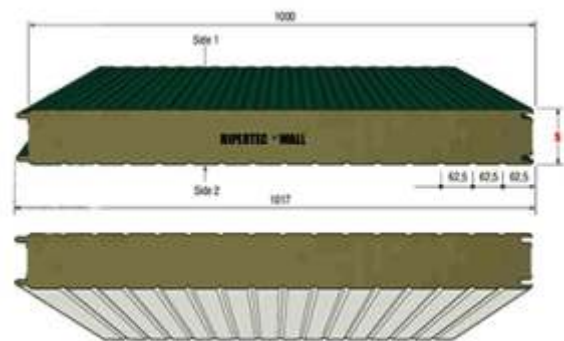


Self-supporting insulation panel insulated with rockwool for roof and wall applications, which require a high degree of fire resistance and high degree sound insulation.

## Wall Panels

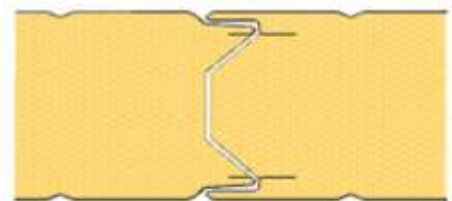
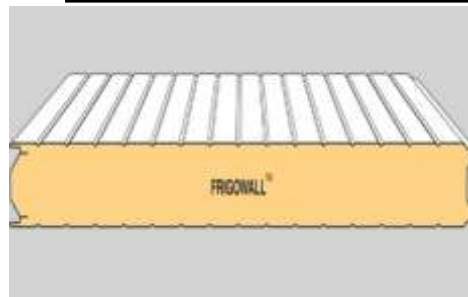


Self-supporting polyurethane insulation metal panel system, insulated with rigid PUR/PIR foam, with a concealed-fixing method for high quality industrial and commercial buildings, where good aesthetics are paramount.



Self-supporting insulation panel insulated with rockwool for wall and partition applications, which require a high degree of fire resistance and acoustic insulation.

## Cold Room Panels



Frigowall is the most suited insulated sandwich panel for cold storage industry due to its "state-of-the-art" double tongue and groove joint, which eliminates the risk of thermal bridge and avoids any moisture ingress between the panels. Frigowall is used for walls, partition and ceiling of the cold storage.

## ENERGY EFFICIENT CLEAN ROOM SOLUTIONS

Our insulated panels designed and produced for cleanrooms for semi-conductors, electronic equipment, precision machines, aerospace, pharmaceutical and many other industries that require dust and biological particles-controlled environment.

### Advantages of PU panels over PS panels

- Easy installation
- Temperature barrier
- Better thermal resistance
- Non-CFC
- Groove lock with PVC

### Main Product

- PU panel/PIR
- Mineral wool panel (Rockwool/Glasswool)
- Door & accessories

### Application

- Industrial clean room
- Biological clean room



## RAINWATER GUTTER (6", 8", 12")

Width	160/200/320 MM
Depth	100/140/200 MM
Length	3 METERS / 5 METERS
Thickness	2.5 / 3 / 3 MM (4 Kg/cm <sup>2</sup> Gauge), Added rib for extra strength
Material	uPVC (Unplasticized Poly Vinyl Chloride)
Colors	Milky White, Brick Red, Blue, Dark Grey, Coffee Brown
Flow capacity	16 / 26 / 52 Liters / Meter
Minimum life	25 Years



Milky White



Brick Red



Dark Grey



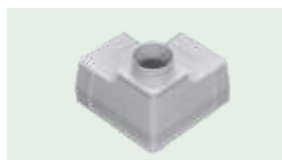
Coffee Brown



Blue



Euro Guard  
Hysquare Corner



Euro Guard Hysquare  
Corner Drop/ Elbow Drop



Euro Guard  
Hysquare End Drop



Euro Guard  
Hysquare Center Joint



Euro Guard  
Hysquare uPVC Clamp



Euro Guard Hysquare uPVC  
with GI Extension Clamp



Euro Guard  
Hysquare End Cap



Euro Guard  
Hysquare Center Drop

## HYSQUARE PIPE

Width	75 MM
Depth	100 MM
Length	3 METERS / 5 METERS
Thickness	2 MM (4 Kg/cm <sup>2</sup> Gauge)
Material	uPVC (Unplasticized Poly Vinyl Chloride)
Colors	Milky White (Other colors can be painted using enamel paint)
Installation	Use round x square adaptor to fit to outlets. Use solvent cement to stick to fittings. Self screw to fittings to provide support vertically.
Minimum life	25 Years



Euro Guard Pro  
Round X Square Adaptor



Euro Guard  
Hysquare Pipe Coupling



Euro Guard  
Hysquare Pipe Clamp



Euro Guard Hysquare  
Pipe Elbow 90 Degree



Euro Guard Hysquare  
Pipe Elbow 45 Degree



Office/Godown: KHK Group, B Block, Autonagar, Visakhapatnam 530012  
Web : [www.Khkgroup.in](http://www.Khkgroup.in) Mail : [info@khkgroup.in](mailto:info@khkgroup.in)

**VIZIANAGARAM**  
8977169444

**VISAKHAAPTAM**  
9701711344

**RAJAHMUNDRY**  
9100260944